

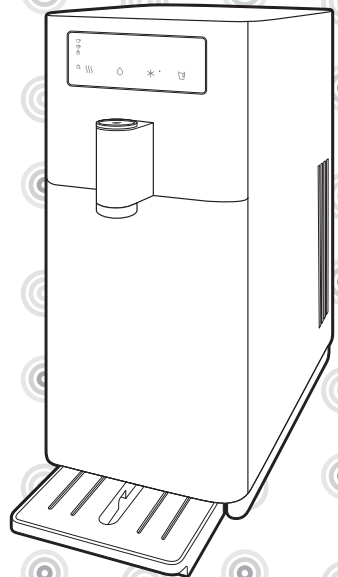


COWAY LOVES THE PLANET
This paper can be recycled.

Coway

Water Purifier CHP-6200N

- This product cannot be used if the voltage is different from that mentioned in the rating plate.
- For your safety and proper use of the product, please read this User's Manual before use.



FEATURES

1

Direct water purification system

Nanotrap™ Filter removes particulates in drinking water, waterborne microorganisms, bacteria and virus.

Plus Inno-Sense Filter(D) improves the taste of water by removing pollutants, such as odor-causing substances, soluble contaminant, chlorine and volatile organic compounds (VOC's).

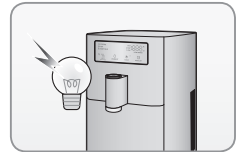
Direct water purification system has been applied for more hygienic use.



2

Electronic Cooling System

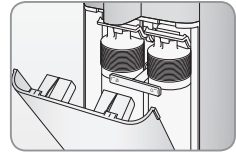
Our cooling system does not use a coolant and is an environmental friendly water purifier. In addition, as the unit uses an electrical based cooling function, external noise is reduced.



3

Easy Filter Replacement

Unlike the existing difficult water purifier filter replacement method that takes a long time, you can now easily replace the filter.



4

Small, Slim, Sophisticated Design

The sophisticated slim design makes it easy to use even in small spaces.



5

Smart LED Display

Through the LED display on the control panel & indicator, you can check the operating status of the product.



6

Instant Water Heating

Instant water heating function enables you to have more hygienic water than stored hot water. Also it helps to save energy as heating function is activated only when needed.



DEAR CUSTOMERS

Thank you for using **Coway Water Purifier**.

Please read this User Manual to learn about proper usage and maintenance of the product.

When a problem occurs while using the product, it can be solved by referring to the instructions in this manual.

CONTENTS

Product Information

- | 03 | **Safety Information**
 - Power
 - Installation
 - During Use
 - Others
- | 07 | **Parts Name**
- | 08 | **Water Purification Process**

How to use

- | 09 | **Please Check Before Use**
- | 10 | **Buttons and Indicators**
- | 14 | **How to Get the Desired Water**
 - How to Get Hot Water
 - How to Get Ambient Water
 - How to Get Cold Water

Maintenance

- | 16 | **How to Install**
- | 19 | **How to Clean**
- | 23 | **Filter Replacement**
- | 24 | **How to Replace the Filter**

Others

- | 26 | **Troubleshooting**
- | 27 | **Specifications**
- | 28 | **Water Flow Diagram**

SAFETY INFORMATION

Be careful to keep this safety information.

Please read this information to prevent property loss and ensure your safety.



for 220 V - 240 V~, 50 Hz use only

▲ Danger : Indicates an imminently hazardous situation which, if not avoided, will result in death or serious injury.

- Do not use a damaged power plug or loose power outlet.
- Do not pull on the power cord.
- Do not pull on the power cord to move the product.
- Do not touch the power plug with wet hands.
- Do not bend the power cord excessively or put it under a heavy object to avoid damage or deformation.
- Do not plug and unplug the power cord repeatedly.
- When the power area comes into contact with water, unplug the power plug and completely dry it prior to use.
- Make sure to unplug the power cord when repairing, inspecting the product or changing its parts.
- Completely wipe off dust, water, etc. on the power plug's pins and areas of contact with the pins.
- Do not connect multiple products to one power outlet. Use a separate socket for the product.
- Lock the tap water supply valve and disconnect power when not using the product for an extended period of time.
- Do not modify the power cord on your own.
- If the power cord is damaged, do not attempt to replace the cord. Instead, contact the service center to replace it.
- Do not install near sources of heat.

-
- Connect the tap water to the cold water tubing.
 - Please lock the tap water valve and disconnect the power plug and contact the service center if there is water leakage from inside the product or if water is puddling around the product.
 - Immediately disconnect the power plug and contact the service center if there is any burning smell or smoke or strange noises from the product.
 - Do not place candles or cigarettes on top of the product.
 - Do not place bowls filled with water, chemicals, food, small metals, or flammable substances on top of the product.
 - Anyone who has insufficient physical, sensory or mental ability (including children) must be supervised or instructed to use the product.
 - It is recommended to keep eyes on children to make sure they do not play with the product.
 - Disconnect the power plug prior to cleaning.
 - Do not arbitrarily open, repair, or remodel the product.
 - This appliance can be used by children aged from 8 years and above and persons with reduced physical, sensory or mental capabilities or lack of experience and knowledge if they have been given supervision or instruction concerning use of the appliance in a safe way and understand the hazards involved. Children shall not play with the appliance. Cleaning and user maintenance shall not be made by children without supervision.

SAFETY INFORMATION

▲ Warning : Indicates a potentially hazardous situation which, if not avoided, could result in death or serious injury.

- Do not apply excessive force or impact to the product.
- Do not install the product on a tilted surface. Do not apply excessive force or impact to the product.
- Do not install in a location with too much humidity or dust or in a location exposed to water or rain.
- Do not directly spray water on product for cleaning or use benzene or thinner to wipe the product.

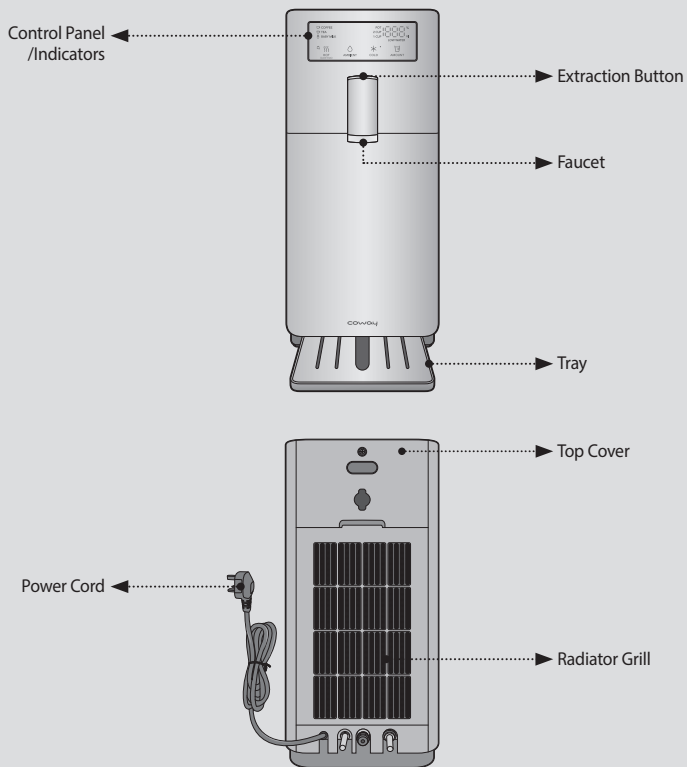
//////////

⚠ Caution : Indicates a potentially hazardous situation which, if not avoided, may result in minor or moderate injury or damage to the product or other properties.

- Use tap water as source water.
 - ① Use tap water that is suitable for drinking as source water.
 - ② Do not use in places of high temperatures such as a bathroom.
 - ③ Do not use in places of high humidity or temperature.
- Drain the stored water as well as newly filtered water one more time completely prior to use when not using the product for an extended period of time.
- Hot water is very hot, so avoid direct contact with your body.
- Please replace the filter according to the filter replacement cycle for clean water.
- Make sure to use the new hose set provided with the product. Do not use an old hose set.
- Do not use the filtered water for replacing water in fish tanks and aquariums.

PARTS NAME

Front/Rear



Accessories



User Manual



Fitting Clips



Distance Keeping Pole



Distance Keeping Guide



Tips

- Tools for cleaning the product and for filter replacement are not provided along with the product.
- Product servicing by specialists is provided to rental and membership customers.

WATER PURIFICATION PROCESS

The essence of the water purification system lies in the filters.

Using an uncertified filter; or even using a certified yet expired filter may reduce filter performance.

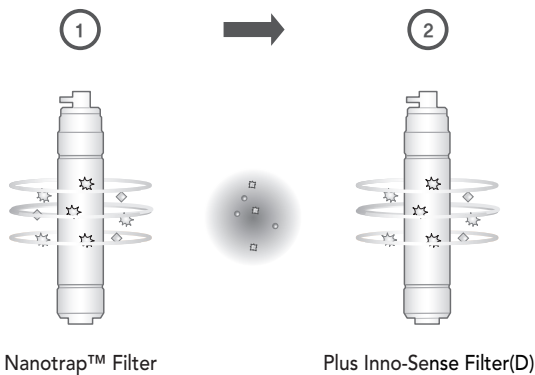
2-Step Water Purification System (CHP-6200N)

Step 1 : Nanotrap™ Filter

Nanotrap™ Filter removes particulates in drinking water, waterborne microorganisms, bacteria and virus.

Step 2 : Plus Inno-Sense Filter(D)

Plus Inno-Sense Filter(D) improves the taste of water by removing pollutants, such as odor-causing substances, soluble contaminant, chlorine and volatile organic compounds (VOC's).



Tips

Uses of the disposed water

- The disposed water should be used only for cleaning house, cloths, or purposes other than drinking.
- Never use the disposed water for drinking or for cooking.

CHECK BEFORE USE

Please check before use!

⚠ This product is for 220 V - 240 V~, 50 Hz.

Make sure to connect the power plug to a grounded 220 V - 240 V~, 50 Hz outlet. It requires a power supply to operate.



■ **Open the tap water supply valve.**

The water purifier can work properly only when the tap water is supplied.

■ **After installing the water purifier**

After installing the product, run continuous extraction of ambient water for 3 minutes and continuous extraction of cold water for 5 minutes before use. After installation, make sure to run continuous extraction for 1 cup of hot water before use.

■ **When indicator light on the display is turned off**

When the indicator light is off, check if there is a blackout or if the power supply is cut off for other reasons.

■ **Regular filter replacement**

Regular filter replacement is crucial for clean drinking water. Using expired filters decreases water purifier performance, so please replace the filters on time.

■ **When the product has not been used for a long time**

If you stored water or have not used the system for a long time, run continuous extraction for 1 cup of hot water before use.

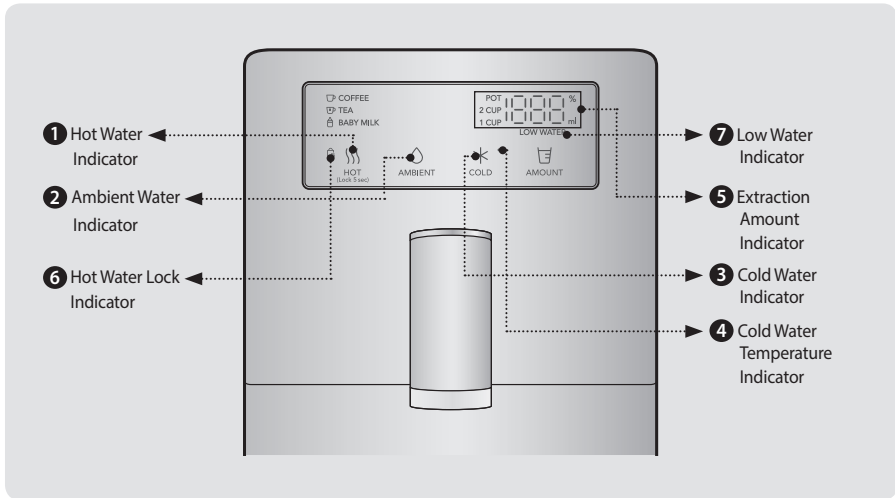


Tips

- Turn off the tap water valve when the product is not in use for a long time.

BUTTONS AND INDICATORS

Indicators



1 Hot Water Indicator

The indicator lights up when hot water is selected.



2 Ambient Water Indicator

The indicator lights up when ambient water function is selected.



3 Cold Water Indicator

The indicator lights up when cold water function is selected.



4 Cold Water Temperature Indicator

The indicator lights up according to the temperature of the cold water. When the light indicator turns blue, the water is at its coldest.



5 Extraction Amount Indicator

The amount of selected extract is displayed.
 * 4 Stages(1 CUP 250 ml / 2 CUP 500 ml / POT 1 000 ml / Continuous Extraction(CON)).



6 Hot Water Lock Indicator

The indicator lights up when hot water lock mode is selected.



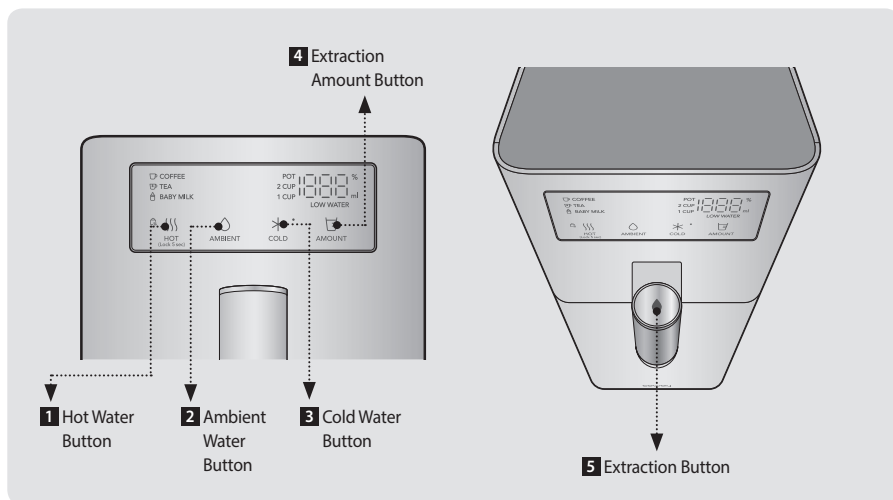
7 Low Water Indicator

It is displayed when the extraction flow rate is lowered and the extraction stops until the indicator turns off.

* The indicator turns on and hot water extraction is limited for 10 seconds if you do not comply with the filter replacement cycle or the installation conditions. Follow the installation conditions and filter replacement cycle.

BUTTONS AND INDICATORS

Buttons



HOT
(Lock 5 sec)

1 Hot Water Button

Use when you wish to extract hot water. Each time you press the button, you can set the hot water temperature(COFFEE, TEA, BABY MILK).



AMBIENT

2 Ambient Water Button

Press it when you wish to extract ambient water.



COLD

3 Cold Water Button

Use when you wish to extract cold water(Press for more than 2 seconds to select, press for more than 5 seconds to release).



AMOUNT

4 Extraction Amount Button

Use when you wish to select desired extraction amount.

* 1 CUP 250 ml / 2 CUP 500 ml / POT 1 000 ml / Con (Continuous Extraction) will be selected in order.



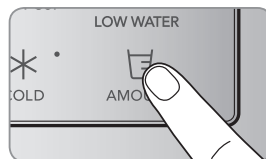
5 Extraction Button

Press it when you wish to extract water.

■ If you wish to use the fixed amount extraction function

You can touch the fixed amount extraction button in succession to switch between 4 options : 1 cup (250 ml), 2 cups (500 ml), POT (1 000 ml) and Con(Continuous extraction for about 3 minutes).

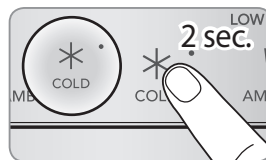
- * During extraction, press the extraction button again to stop extraction.
- * The initial setting is set to 1 cup. If you wish to change the default setting, press the desired extraction volume button for 2 seconds (continuous extraction cannot be set as the default setting).



■ Using the cold water function

Touch the cold water button for at least 2 seconds and check if the cold water indicator on the display lights up. To turn off the cold water function, touch the cold water button for more than 5 seconds.

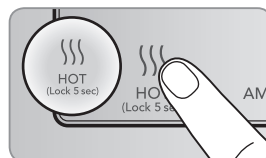
- * After turning on the cold water function, you can drink cold water after about 3 hours.
- * When you use the product for the first time after the product is installed, select the cold water mode and extract water using the continuous water extract feature until water comes out.
- * When cooling is completed, the LED on the upper right changes in color from white to blue.
- * According to the ambient temperature, it can take 3 to 5 hours to complete the cooling process.
- * To maintain performance, make sure to separate the mesh from the back of the product and clean it every two months if possible.



■ Using the hot water function

Press hot water button and check that the hot water indicator is turned on.

- * When extracting hot water, pay special attention to avoid burns.
- * When using the hot water function once after the power is turned on, drain 1 cup of hot water first and it will take approximately 20 to 30 seconds and the progress will be displayed at 0 to 100 %.
- * If you use hot water excessively for a certain duration, its use may be limited for 5 minutes to protect the product.

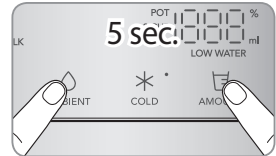


BUTTONS AND INDICATORS

■ To use the mute function

If you touch the ambient water button and the fixed amount extraction button for more than 5 seconds, the mute function is activated. When the mute function is activated, the alarm does not ring even when you touch the lock/clean/cold/hot extract button or when the extraction is completed or switched to the continuous extraction.

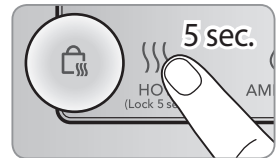
* To release the mute function, touch the ambient water button and the fixed amount extraction button for more than 5 seconds.



■ To use the hot water lock function

Press and hold the hot water button for more than 5 seconds to generate the setting sound and turn on the lock LED.

To turn off the hot water lock function, press the hot water button for more than 5 seconds.

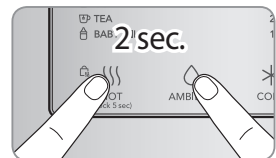


■ To use the all-lock function

Press and hold the hot water button and the the ambient water button simultaneously for more than 2 seconds to set the all-lock function. To turn off the all-lock function, press the hot water button for more than 2 seconds.

* When all-lock function is set, all indicators turn off and only the hot water lock indicator light up.

* If you set the all-lock function and then canceled it while using the hot water lock function, the hot water lock function will be maintained and the lock button will light up.



HOW TO GET THE DESIRED WATER

How to Get Hot Water

- The fixed amount extraction method

Touch the hot water button and select the desired extraction amount with the extraction amount button.

Press the extraction button, and hot water is extracted according to the selected quantity.

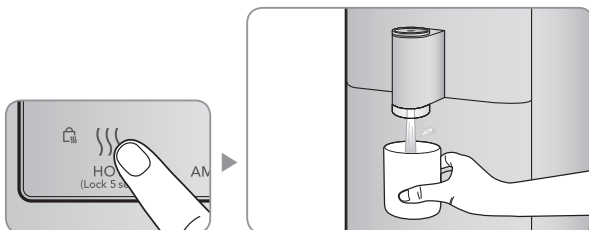
During extraction, if you press the extraction button again, then extraction is stopped (250 ml, 500 ml, 1 000 ml, and continuous extraction can be selected, in that order).

- Continuous extraction method

Press the extraction button after the extraction amount display has changed to Con by pressing the fixed amount extraction button, or press the extraction button for 2 seconds or longer. During extraction, if you press the extraction button again, then extraction is stopped.

- Hot water temperature selection method

Select the desired temperature with the hot water button (Coffee, tea, and baby milk can be selected, in that order).



Tips

- When extracting hot water, pay special attention to avoid burns.
- When extracting hot water, keep the cup close to the faucet as the water may splash. (However, in case of inconvenience, use the faucet extension adapter).
- If you do not use hot water for a long time, the temperature of the first glass of hot water may be slightly lower.
- ▲ To prevent hot water burns, the system automatically switches to cold water if the button is not pressed within a certain amount time (about 7 seconds) after the hot water button was selected. (When the cold water function is not selected, the state is changed to the ambient state.)
- If you hear only warning sounds with no hot water coming out, check the lock button LED (see p.16).
- Instant hot water heating method takes some time to extract. (Hot water temperature 25°C, 0.5 L/min, standby time 4 seconds)
- When hot water is extracted, white debris (lime) may occur depending on the conditions of use. If you find a white foreign substance, please contact our service staff and ask for a Plus Service (Scale Removal Service).
 - * White foreign substance is limescale, which is produced by heating of the minerals in water.
- If you use hot water excessively for a certain duration, its use may be limited for 5 minutes to protect the product.

HOW TO GET THE DESIRED WATER

How to Get Ambient Water

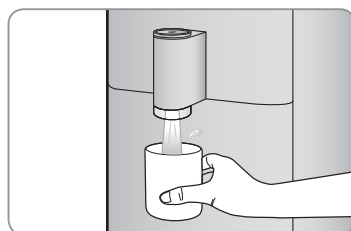
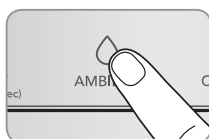
- Fixed Amount Extraction Method

Touch the ambient water button and select the desired extraction amount with the extraction amount button. Press the extraction button, and ambient water is extracted according to the selected quantity.

During extraction, if you press the extraction button again, then extraction is stopped (250 ml, 500 ml, 1 000 ml, and continuous extraction can be selected, in that order).

- Continuous Extraction Method

Press the extraction button after the extraction amount display has changed to Con by pressing the fixed amount extraction button, or press the extraction button for 2 seconds or longer. During extraction, if you press the extraction button again, then extraction is stopped.



How to Get Cold Water

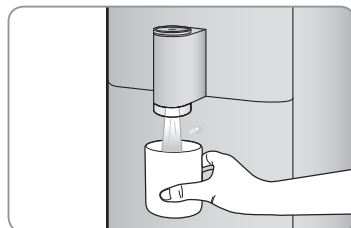
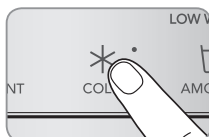
- Fixed Amount Extraction Method

After checking the cold water temperature indicator, touch the cold water button and press the extraction amount button to select the desired extraction amount. Press the extraction button, and cold water is extracted according to the selected quantity. During extraction, if you press the extraction button again, then extraction is stopped (250 ml, 500 ml, 1 000 ml, and continuous extraction can be selected, in that order).

- Continuous Extraction Method

Press the extraction button after the extraction amount display has changed to Con by pressing the fixed amount extraction button, or press the extraction button for 2 seconds or longer for continuous extraction. During extraction, if you press the extraction button again, then extraction is stopped.

* Cold water mode is set as the default during stand-by.



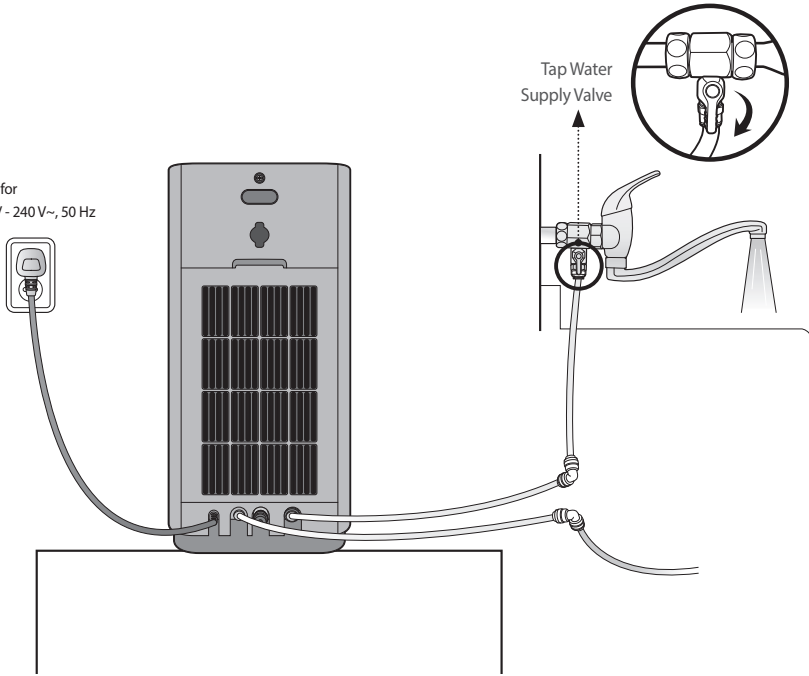
Tips

- If cold water is not being dispensed, please check to see whether the cold water indicator on the display unit is turned on (see p.13).

HOW TO INSTALL

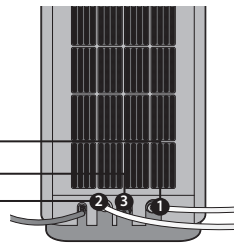
Installation Guide

Only for
220V - 240V~, 50 Hz



Connect the orange inlet for the tap water supply hose **1** to the tap water pipe. Connect the drain connection **2**. (COLD OUT **3**)

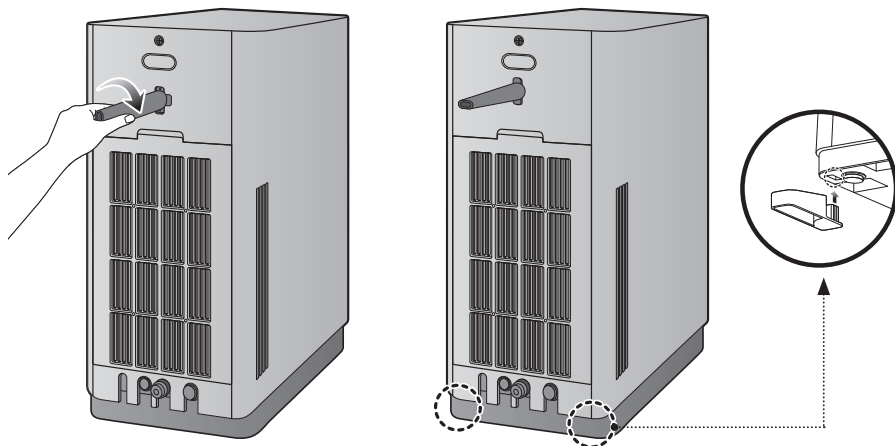
- INLET : Tap water supplying hose (Orange) tubing
- COLD WATER OUTLET : Fitting
- HOT WATER OUTLET : Drain (Grey) Connection



► Feed water supply condition : 20 psi, 3 LPM or higher

HOW TO INSTALL

Installation Guide



Tips

⚠ If the components above are not installed, it may compromise on cooling performance.

Caution!**⚠ Place for Installing Water Purifier I**

Avoid installing the water purifier in an area with uneven surface, extreme humidity, extreme light exposure, extreme dust exposure, and water exposure, etc.

⚠ Place for Installing Water Purifier II

Keep the radiator grill at the rear of the product at least 10 cm away from the wall and make sure that the installation floor is firm.

⚠ Relocation and installation

When moving between locations, wait at least 30 minutes after installation to connect the power.

⚠ Cold Water Tubing

Make sure to connect it to the cold water tubing
(If connected to the hot water tubing, the filters can get damaged).

⚠ After Installation

After power-up, when FL is displayed, select the ambient water button and press the extract button to flush the filter.

- Prepare a large container to contain all the water as the flushing process takes 3 minutes.
- The process is displayed at 0 to 100% on the indicator.

Cold water is not extracted at first use since it takes some time to fill the cold water tank.

The hot water may not be available immediately after the product is turned on.

It takes some time to set the hot water feature.

**Tips**

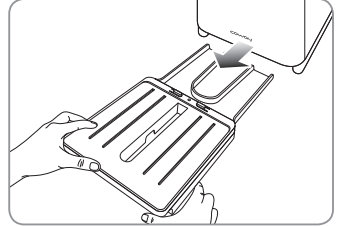
- ⚠ Some residual water used during post-manufacturing inspection may be present in the filter. Do not be alarmed as it is not a used product.
- ⚠ Do not reuse the previously used tap water supply valve and hose when installing the purifier.

HOW TO CLEAN

How to Clean the Tray

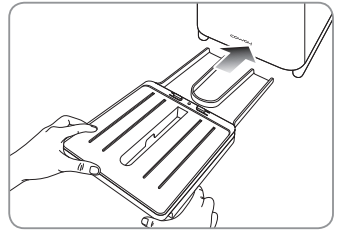
1. How to take out the tray

The front of the tray can be easily separated by lifting it up slightly.
Separate the tray and wipe the inside and outside with a cloth.



2. How to assemble tray

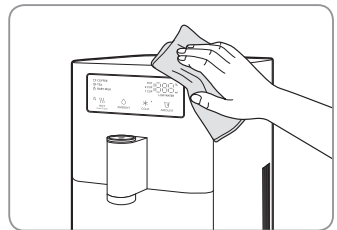
Slide the tray into the bottom of the product and
then place the cover in place.



How to clean the product body (once every 2~4 weeks)

Wipe the product with a clean towel.

* For thicker layers of dust, use a wet towel to wipe
(Do not use an abrasive.)

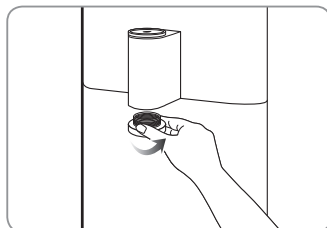


Tips

- Do not directly spray water to the product body to clean it.
- Do not use thinner, benzene or agent containing abrasives or rough cloths to clean it.

How to Clean the Faucet

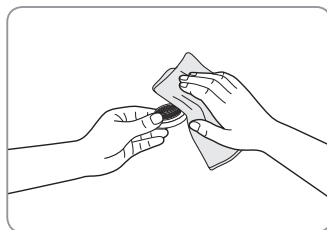
1. Detach the faucet by turning it counter clockwise.



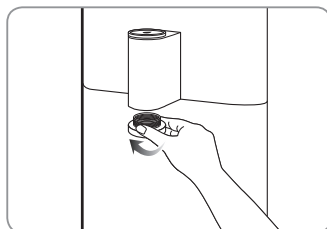
2. Rinse the faucet with water.



3. After rinsing, wipe the faucet with a soft, dry cloth.



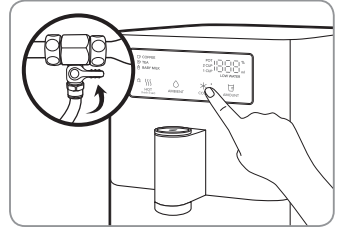
4. Attach the faucet back by turning it clockwise.



HOW TO CLEAN

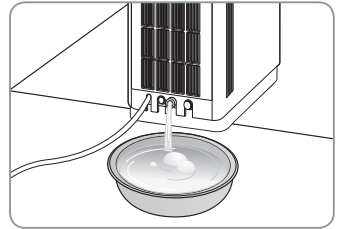
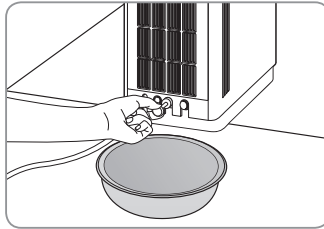
How to Drain the Internal Water Tank

1. Close the connection valve and press the cold water button at the front of the product for about 5 sec to turn off the cold water function.

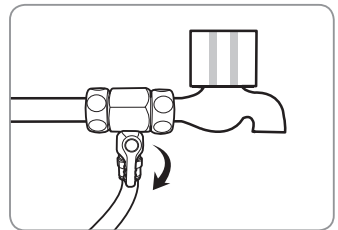


2. Remove the cold water drain cap at the rear of the product to completely drain the water from the cold water tank.

* If you remove the cold water drain cap, then cold water is drained immediately. So prepare a container for the cold water.



3. Open the connection valve and press the cold water button for 5 seconds to turn on the cooler.

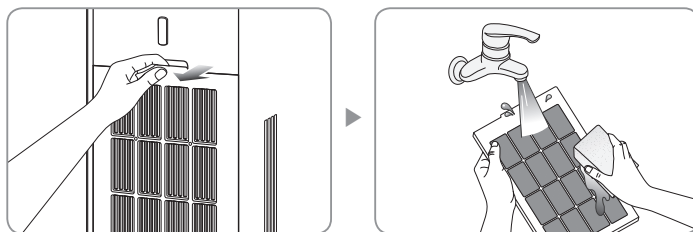


How to Clean the Rear Mesh

1. How to remove the rear mesh

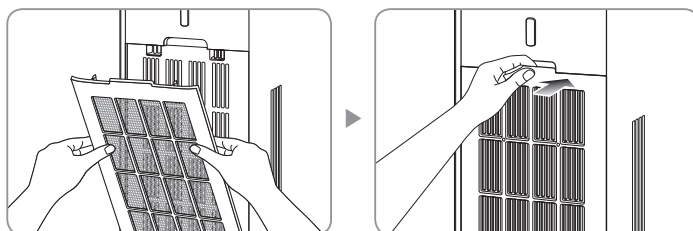
Put a finger in the upper groove of the mesh and pull it to remove.

Clean the mesh with a cloth and water.



2. How to assemble the rear mesh

Insert the mesh into the lower groove of the product and then push the mesh toward the product.



FILTER REPLACEMENT

■ Filter Replacement Cycle

If the filter is not regularly replaced, it may degrade the water quality from the product.

The filter change cycle may vary within the range of expected replacement cycle depending on the source water quality.



The period for filter change is calculated based on 10 L water usage per day for a household of 4 members.

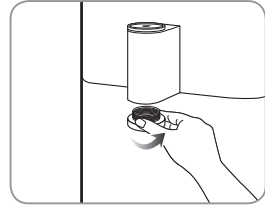
CHP-6200N

Filter Name	Expected Replacement Cycle
Nanotrap™ Filter	4 months
Plus Inno-Sense Filter(D)	4 months

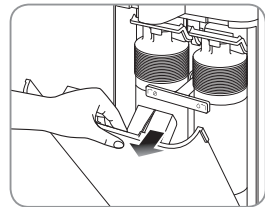
HOW TO REPLACE FILTER

Replace the Filter!

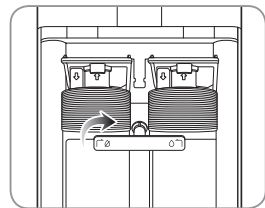
1. Detach the faucet by turning it counter clockwise.



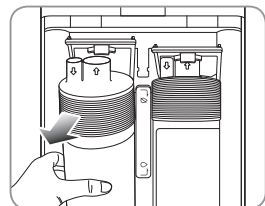
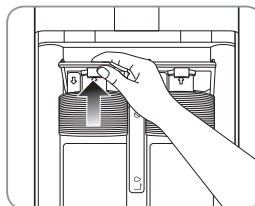
2. Remove the filter cover on the front.



3. Shut off the tap water valve
(rotate 90 degrees in the direction of CLOSE).

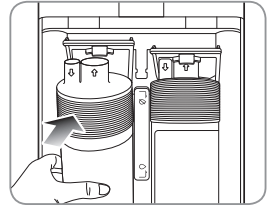


4. Please take out the filter by lifting the filter holder.

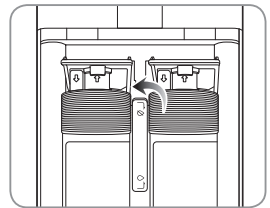
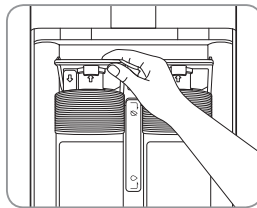


HOW TO REPLACE FILTER

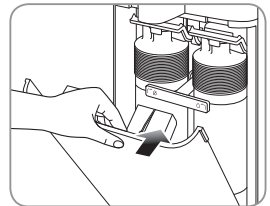
5. Insert the new filter in the appropriate order of the filters.



6. Check that the filter holder comes down for a secure fit. Then, open the tap water valve (Rotate 90 degrees in the direction of OPEN).



7. Close the filter cover on the front.



Tips

⚠ Be sure to wash the new filter before use.
- Nanotrap™ Filter / Plus Inno-Sense Filter(D) : Wash the new filter for about 3 minutes using continuous water extraction after installing the filter.



Tips

For fitting, tubing, or faucet that have been used for more than 5 years, contact the service center, and we can replace it with new ones(Replacement costs may incur).

TROUBLESHOOTING

The water purifier may operate abnormally because the user is unfamiliar with the product or due to some other reasons and not because of a product malfunction. In such a case, problems can be easily solved without help from the service center by checking the following.

If the problem is not solved after checking the following, please call the service center.

Symptom	Check	Measures to take
Water tastes strange.	• Isn't it time for filter replacement?	Please request for filter replacement.
Water is not being dispensed.	• Is the device disconnected from the water supply or is the tap water supply valve locked?	Open the tap water supply valve.
	• Did you miss the filter replacement period?	Please request for filter replacement.
Amount of water filtration is much lower than before.	• Isn't it time for filter replacement?	Please request for filter replacement.
	• Is the power connected?	Check that the power cord is plugged into a 220 V - 240 V~, 50 Hz outlet.
	• Is the tap water supply valve locked?	Open the tap water supply valve.
	• Has the temperature of tap water gone down rapidly?	The amount of water filtration decreases as water temperature drops.
Cold water is not being dispensed.	• Is the cold water indicator turned on?	Press the cold water button for 3 seconds to turn on the cold water function.
	• The cooling unit does not seem to work.	Please request for repair service.
	• Is the power connected?	Check that the power cord is plugged into a 220 V - 240 V~, 50 Hz outlet.
	• Is the tap water supply valve locked?	Please open the tap water supply valve.
	• Is the product too close to the wall?	Keep the product at least 10 cm away from the wall.
Hot water is not being dispensed.	• Is the hot water lock indicator turned on?	Turn off the hot water lock function.
	• Is the tap water supply valve locked?	Open the tap water supply valve.
	• Is the power connected?	Check that the power cord is plugged into a 220 V - 240 V~, 50 Hz outlet.
	• Is there leakage or flooding of hot water?	Please request for repair service.
Water does not come out or the drained quantity is different than before.	• When you selected hot water extraction, did you hear a warning sound and water could not be extracted?	This is an automatic shutoff function to prevent overheating of the heater inside the product. After a while, you can extract hot water again.
	• Isn't it time for filter replacement?	Please request for filter replacement.
	• Is the device disconnected from the water supply or is the tap water supply valve locked?	Open the tap water supply valve.
Water leaks.	• Is the hose bent or cut?	Unfold the hose correctly.
	• Is there no water from the inside of the product?	After closing the tap water supply valve, ask for maintenance service.
The device stops suddenly.	• Is the water supply intact?	Please check the tap water supply valve.
	• Is the power connected?	Check that the power cord is plugged into a 220 V - 240 V~, 50 Hz outlet.
	• Is there leakage or flooding of filtered water?	Please request for repair service.

SPECIFICATION

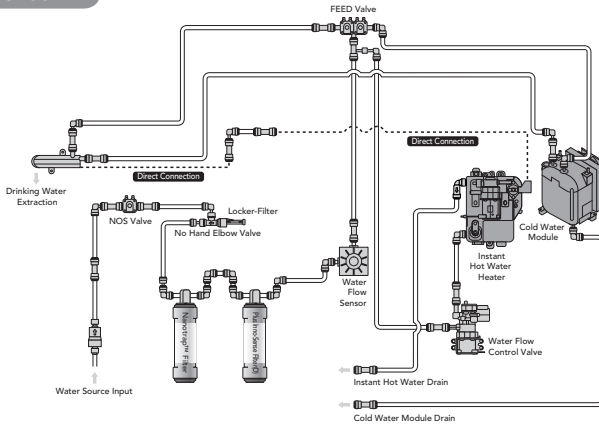
Product Name		Coway Water Purifier
Model Name		CHP-6200N
Filtration Method		Electrostatic adsorption method
Rated Voltage		220 V - 240 V~, 50 Hz
Power Consumption		Cool : 0.5 A, Heat : 2230 W - 2720 W, Total : 2240 W - 2730 W
Details on Indicator		Water temperature display, lock function
Main Functions		Ambient water, cold water, hot water, overheating prevention, fixed amount extraction, continuous extraction
Water Tank Capacity	Cold Water	1.35 L
	Hot Water	Instant hot water heating method
	Ambient Water	Direct water type
	Total	1.35 L
Filter Material	Nanotrap™ Filter	Bohemite, Polypropylene, Cellulose
	Plus Inno-Sense Filter(D)	Active carbon block, felt
Product Size		180 mm (width) × 440 mm (depth) × 422 mm (height)
Tap Water Temperature		5 °C - 35 °C
Working Temperature		5 °C - 35 °C
Effective Water Purification Capacity		640 L
Operating Pressure (Tap Water)		138 kPa – 827 kPa (20 psi ~ 120 psi) minimum tap water capacity 3.0 L/min

- ▶ Water tank capacity depends on the bucket size and may differ from the extraction quantity.
- ▶ Product design and specifications are regulated by law and are subject to change without prior notice to improve the product or its quality.

MALAYSIA
Add: COWAY (M) SDN. BHD Level 20, Ilham Tower, No. 8, Jalan Binjai, 50450 Kuala Lumpur. Careline : 1800-888-111

WATER FLOW DIAGRAM

CHP-6200N



MEMO



MEMO

001

9235363

coway

www.coway.com